

**honky**  
interior architecture & design



# an introduction

**We are a multi-disciplined, award winning architectural and interior design practice based in London.**

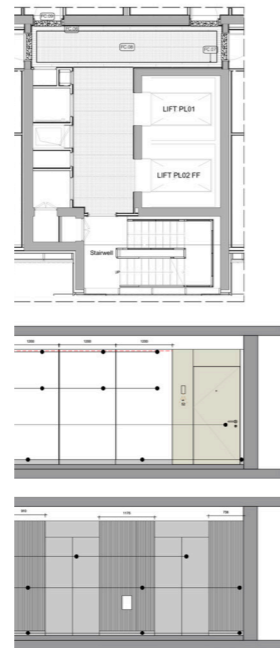
Honky was founded by Christopher Dezille BIID, SBID in 2001. Our work spans affordable to luxury residential projects, hotels and offices. Our diverse and talented team is committed to providing a design service offering innovative design solutions. All elements of the design process are delivered to a superior standard, combining cutting edge detail and exceptional quality.

Internationally recognised, our continued success and strong pedigree stems from a close working relationship with our clients. We tailor the brief to the specific requirements of each private client or developer's target market.

Our in-house architecture and interior design capabilities provide clarity in understanding the required approach to any project at any stage of the design development process. This enables us to create uniquely tailored, individual designs to an exacting standard and attention to detail. We provide a professional, exemplary approach throughout and deliver the highest standards from inception through to completion.



# our approach



## our goal

To offer a fully bespoke interior design service, tailored to the space and individual client needs.

To fully realise the potential of every space, both practically and aesthetically. We achieve this via a broad range of professional services - whether that be clever space planning, bespoke joinery, lighting or specialist finishes - each individually designed scheme seeks out the very best design solution.

## we believe

The interior design process is an active two way relationship between the client and ourselves.

Investing quality time at the briefing stage to fully understand the client's expectations is paramount.

Clear and concise communication at each stage of the project ensures the client remains involved and that the end result delivers the original aspirations.

## how is honky different?

Our practice has earned a reputation for our expertise in being able to deliver projects around the world and our skills are sought internationally.

Seamlessly balancing the importance of creativity and innovation, alongside budget and timescales, is key to both sides of our client base.

Our proven track record is based on a commitment to provide our clients with the very best in terms of design and service.

# our experience



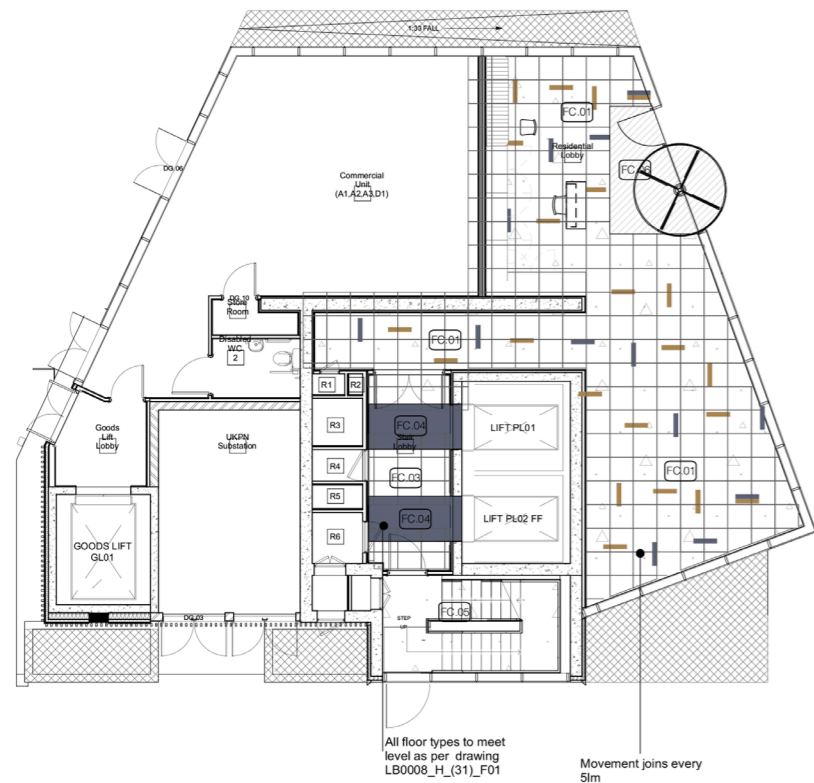
We offer a complete service to our clients from initial concept designs to full specification for luxury residential projects, marketing suites and show apartments.

Our experience spans over 25 years. Our team consistently delivers relevant and practical schemes for all areas of the luxury residential market. We are at the forefront of creating timeless, innovative designs and pride ourselves on our delivery capabilities.

# LBS Properties

## Grand Central

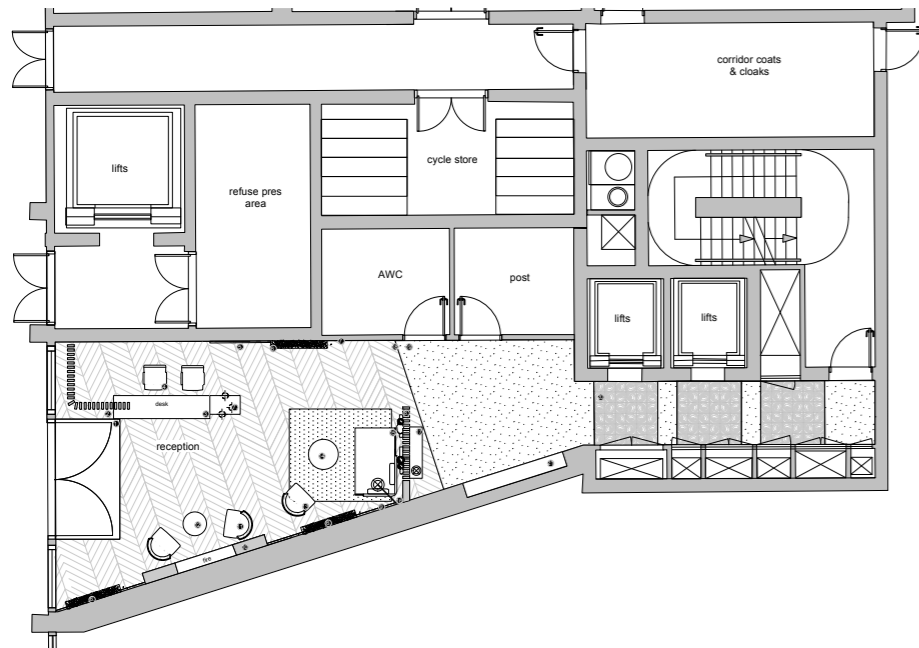
A luxury residential development in Kings Cross, London. We provided interior design and specification to 74 private apartments, penthouses, communal and amenity spaces.



# LBS Properties

## HKR Hoxton

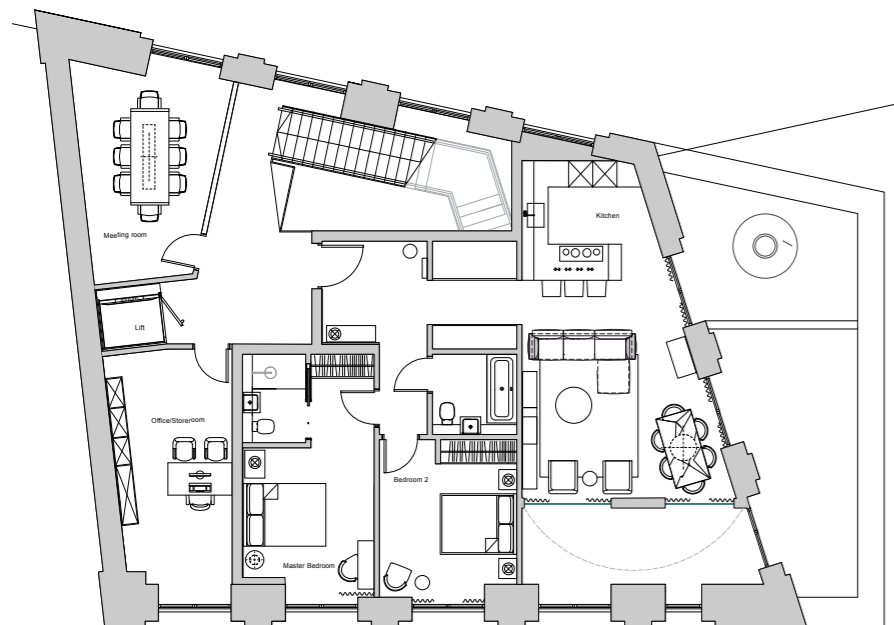
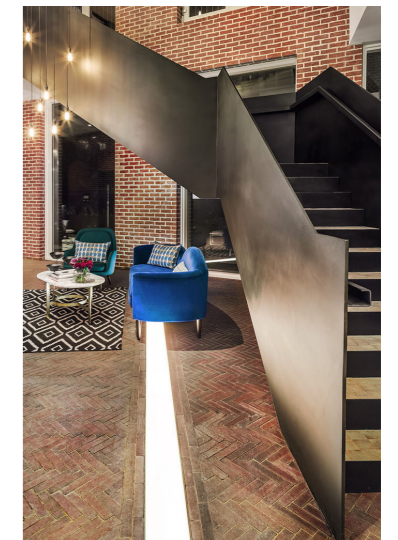
A residential development in East London. Our role was to provide a full interior design and specification to 66 private apartments, communal and amenity spaces.



# Mount Anvil

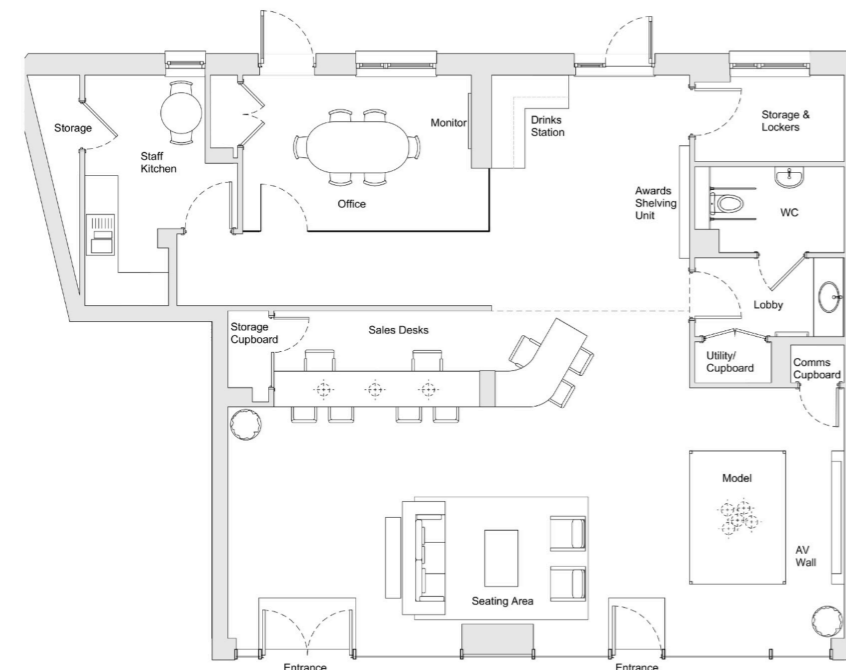
## Keybridge, Vauxhall

Working with Darling Associates Architects we were appointed to design the sales suite, show apartment, and commercial space



# Countryside Acton Gardens

Interior design of the marketing suite and office space for developer, Countryside Properties, in Acton, London.

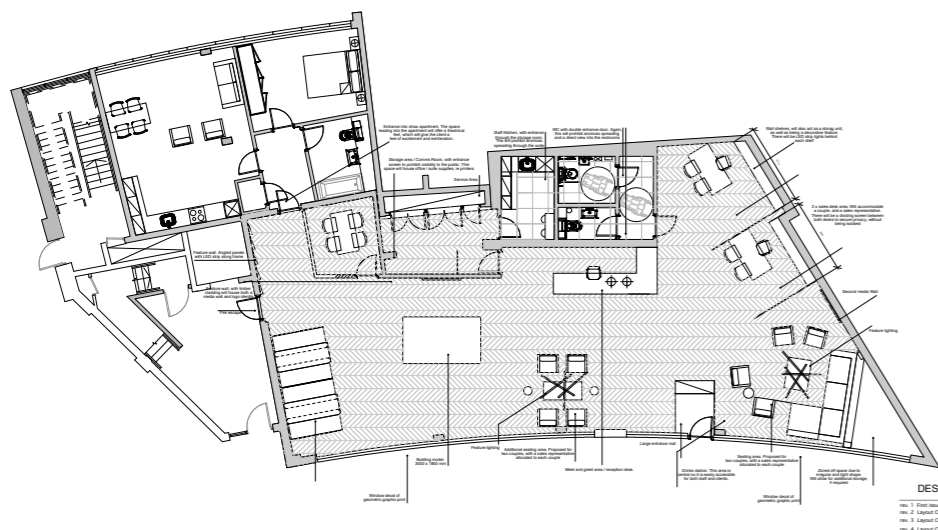




# Mount Anvil

## Fabrica, Jigsaw

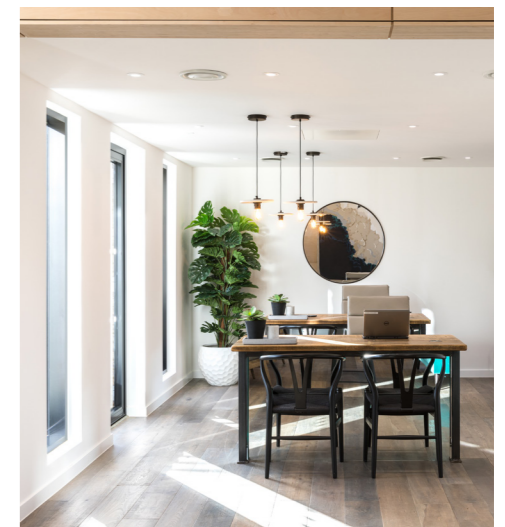
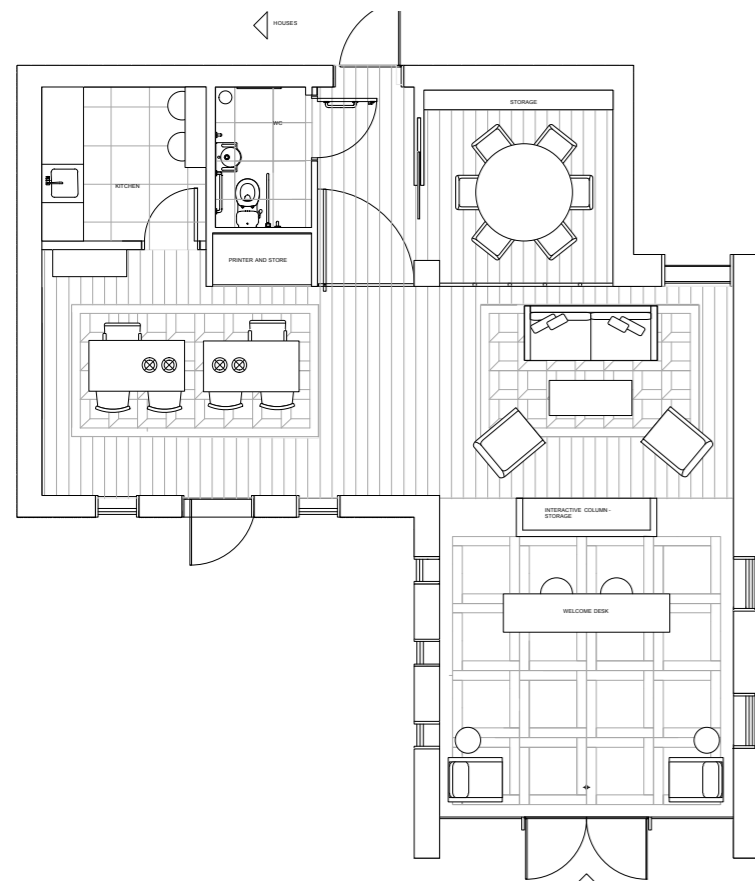
Interior design of the marketing suite for a residential development of 770 homes in Ealing, West London.



# Mount Anvil

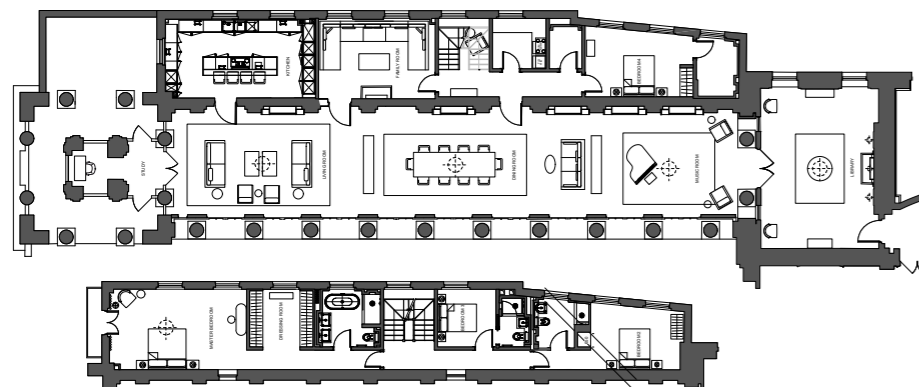
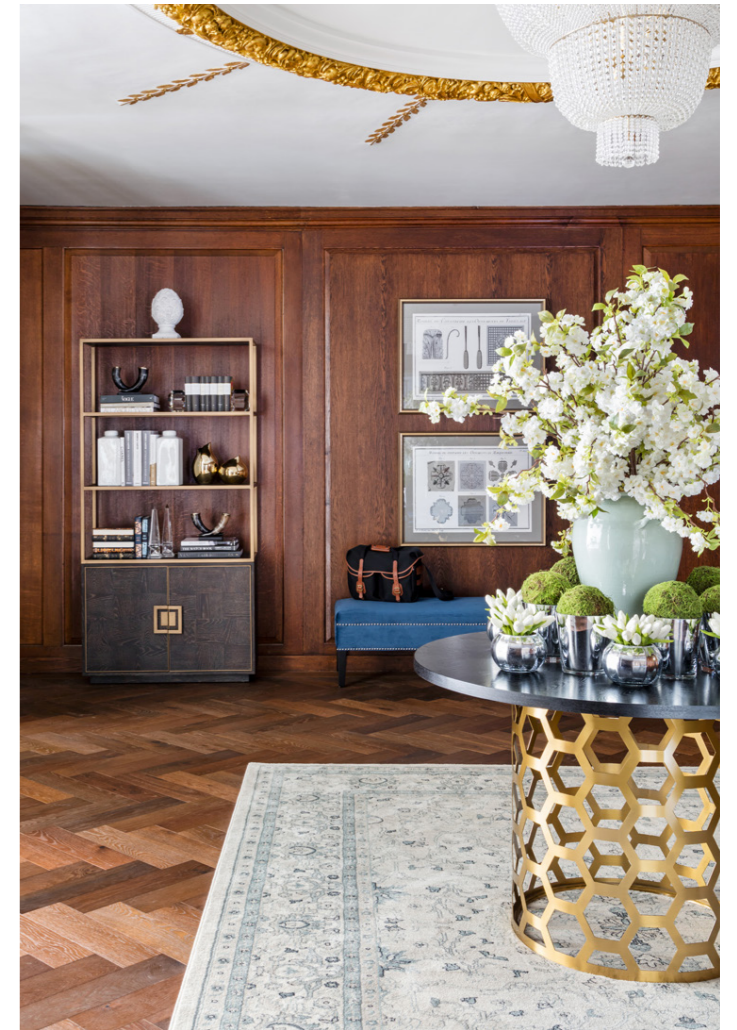
## Fabrica, West Vale Park

A marketing suite collaboration with Darling Associates situated in Surrey.



# London Square Star & Garter, Richmond

A luxury residential development in Richmond where Honky were appointed interior designers for the 6-bedroom show apartment in the East Wing. Our role was to reimagine the spaces and separate them into more residential scaled areas, whilst keeping the overall impact of these historic rooms. We worked closely to maintain the heritage of the building by restoring panelling and the gilded plasterwork ceilings. The joinery's warm tones sit against the dark chestnut herringbone floor and provide the perfect contrast to the honey tones of the original Portland stone walls.



# Dandara Homes

## Petite Route De Campagne, Jersey

A statement scheme of strong accent colours combined with modern furniture pieces, clean lines and bespoke elements throughout. It was important to make the most of the large rooms in this spacious five-bedroom home in Jersey. Honky used grand pieces and a punchy colour palette that provided each room with its own personality, while maintaining an overall language and flow within the home.

Local artisans were commissioned to create the bespoke shelving, window treatments and furniture. This is an exceptional property, and the project was Winner of the International Design and Architecture Awards 2020 for The Best Interior Design project UK



# Eco World London

## Third & Caird, W10

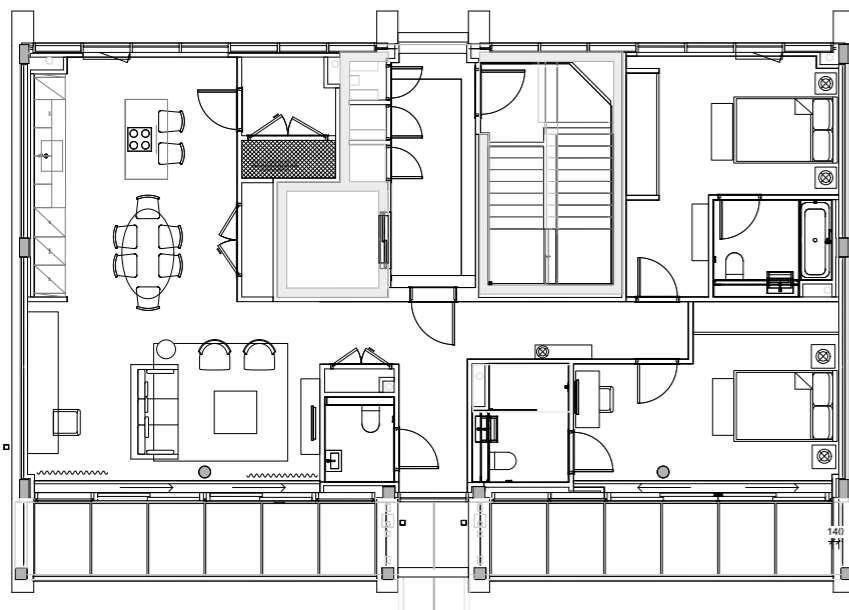
Taking inspiration from the eclectic Portobello Road, the canals of little Venice and the famous Notting Hill the theme was to design spaces in line with an “anything goes” bohemian feel and to stay true to the developments West London roots. Honky’s design of the marketing suite and three-bedroom show house was to feel very natural using tactile details and a sense of place allowing the personality of the residents to shine through. Design pieces and art were used from independent shops and suppliers that reflect the areas diverse communities.



# Riverstone London

## Fulham

A luxury residential development in Fulham overlooking the River Thames. Honky sympathetically designed this exceptional show apartment. Traditional fabrics and wall finishes were used to create warm and inviting spaces but with a contemporary twist. British craftsmen and makers were used for the bespoke joinery and window treatments and these details provided the perfect backdrop for this unique retirement living development.



# London Square Greenwich

In the new one-bedroom show home, We channelled the sleek lines and linear curves of the striking London Square building, designed by Formation Architects, which complements the Grade II listed former Greenwich Town Hall located opposite, an internationally renowned example of Art Deco style.

With bursts of apple green and bright orange on chairs, cushions and accessories, the interiors exude style and energy. In the open-plan living area, a funky desk cabinet with a monochrome Deco-style design, provides a clever solution to working from home.

Muted colours and warm fabrics create a sanctuary in the bedroom, with sleek dark metal finishes on the fitted wardrobes. Fluted panelling adds a glamorous flourish to the front door to each apartment, with specially commissioned black and white photography of the area adorning the walls in the common parts of the building.



---

# our clients

A2Dominion  
Argent  
Barratt Homes  
Berkeley Group  
BMB Investments  
Canary Wharf Group  
Countryside  
Crest Nicholson

Crown Estates  
Ecoworld  
Fabrica  
Harrods Estates  
Joseph Homes  
Land Sec  
LBS Properties  
London Square

Metropolitan Housing  
Mount Anvil  
Nottinghill Housing  
Pegasus Life  
Persimmon  
Pocket Living  
Porchester Estates  
Prime Place

Redrow  
RER London  
Riverstone Living  
St George  
St James  
Strawberry Star  
St William  
Taylor Wimpey



---

**honky**  
Unit 1, Pavement Studios  
40-48 Bromells Road  
London SW4 0BG

**t** +44 (0)207 6227144  
**e** info@honky.co.uk  
**w** honky.co.uk  
**@** @honkyinteriordesign

